



Bronze View, Coventry, CV4 8HR

**SHELDON
BOSLEY
KNIGHT**

LAND AND
PROPERTY
PROFESSIONALS

Property Description

Sheldon Bosley Knight are delighted to present this beautiful, once in a lifetime opportunity this property is now available to the market.

Tucked away in a private close, this immaculate 4-bedroom residence offers a rare combination of timeless charm and contemporary luxury, with a perfect blend of elegance and comfort. From the moment you step inside, you'll be captivated by the abundance of natural light, tasteful finishes, and thoughtful design that flows throughout every room.

Upon entering the home, you're greeted with a beautiful spacious hallway leading to your dedicated home office and a gorgeous separate dining room. A staple of this home, are your fantastic dual living areas. With a charming and spacious main living room, with direct open access to your gorgeous garden room extension, offering versatile living with perfect spaces for families to kick back and relax.

The spacious open-plan kitchen forms the beating heart of the home. With amazing space featuring sleek cabinetry, high-end appliances, and bi-fold doors that open onto a beautifully landscaped garden, ideal for barbecues and summer evenings.

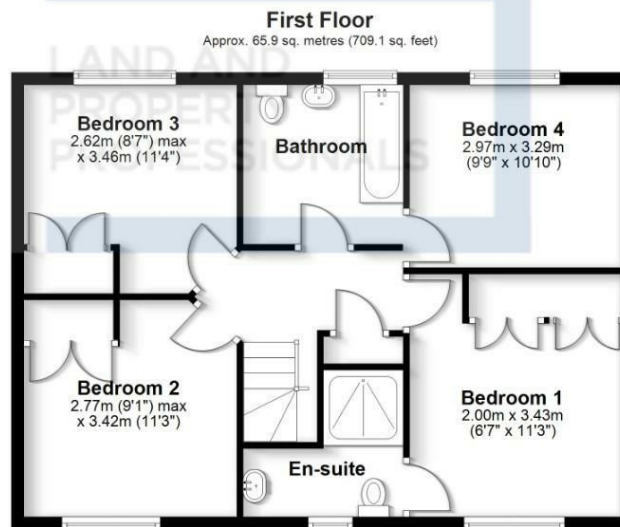
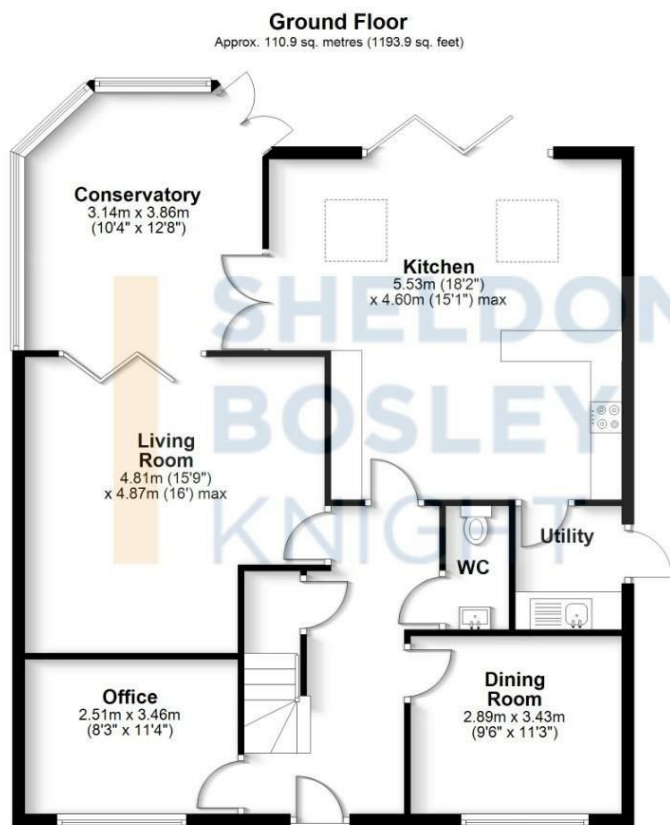
Upstairs, you'll find four generous bedrooms, including a luxurious principal suite with built-in wardrobes and a stylish en-suite bathroom. The additional bedrooms are bright, spacious, and ideal for growing families or welcoming guests. A modern family bathroom completes the upper floor with elegance and practicality and a huge loft space for ample storage space throughout.

Outside, the property boasts a private garden oasis, fully professionally landscaped. To the front, a humongous driveway offers off-street parking, along with a large double garage.

Located close to excellent schools, green open spaces, and vibrant local amenities, this home delivers the lifestyle you've been dreaming of - peaceful yet connected and stylish. Reach out to Sheldon Bosley Knight Coventry to book your viewing today, to ensure you don't miss out!







Total area: approx. 176.8 sq. metres (1903.0 sq. feet)

All efforts have been made to ensure the measurements are accurate on this floor plan, however these are for guidance purposes only.
Plan produced using PlanUp.

Key Features

- Gorgeous 4 bedroom family home
- Beautifully presented
- Luxurious and comfortable living
- Sought after location
- Dual living spaces with huge conservatory extension
- Extended property
- Professionally landscaped garden
- Huge front driveway with large double garage
- Separate convenient utility room
- Tastefully decorated and ready to live in convenience

Guide Price
£740,000

EPC Rating - C

Tenure - Freehold

Council Tax Band - G

Local Authority -
Coventry

We routinely refer clients to both our recommended Legal Firm and a panel of Financial Services Providers. It is your decision whether you choose to deal with these companies. In making that decision, you should know that we receive a referral fee